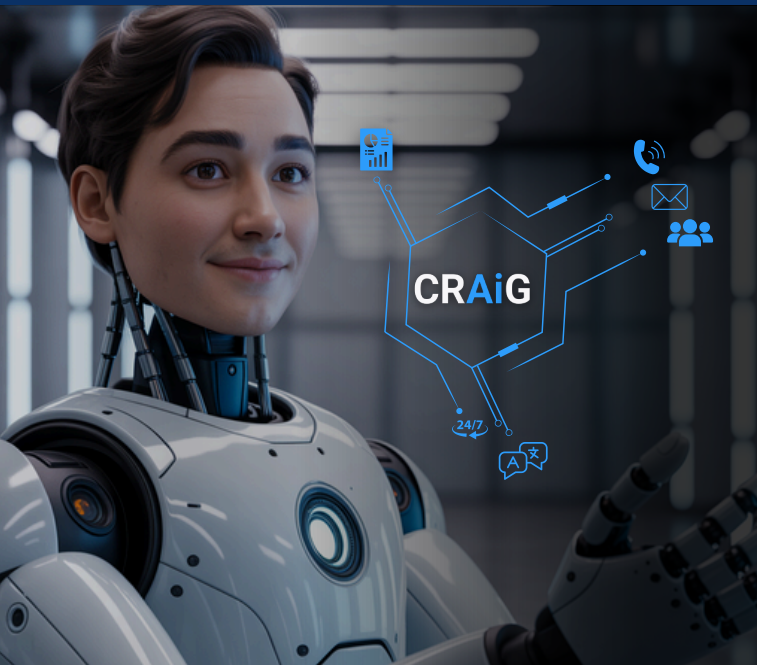




MEET CRAiG

Your Crises Resolution
AI Guide

www.crisis-control.com



WHAT IS CRAiG?

CRAiG is the smart AI assistant built into the **Crises Control Mobile App**. It simplifies emergency management into a human conversation.

Multilingual, always learning, and usable by anyone.

WHY CRAiG?

Emergencies are chaotic. CRAiG removes the noise:

- No dashboard overload
- No waiting for updates
- No confusion about roles

HOW CRAiG WORKS

Powered by AI and your data:

- Understands natural language
- Learns over time
- Aligns with your protocols
- Speeds up resolution time

BENEFITS OF CRAiG

- React faster with real-time info
- Reduce stress and human error
- Empower any user
- Use anywhere at anytime